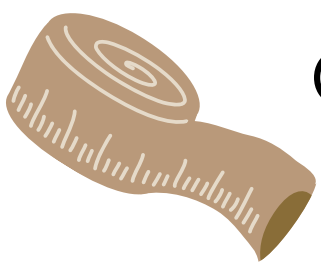


HOW TO MEASURE YOUR SPACE



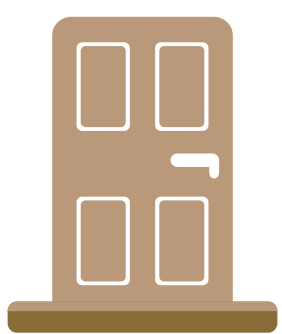
SKETCH THE ROOM

Roughly sketch your room noting where the windows, doors, and fixed furniture pieces are located. This does not need to be pretty or to scale, the measurements just need to be accurate.



GET YOUR TAPE MEASURE

The longer the tape measure, the better. Ideally, 25' is the minimum yours should go so you can measure a whole room easily.



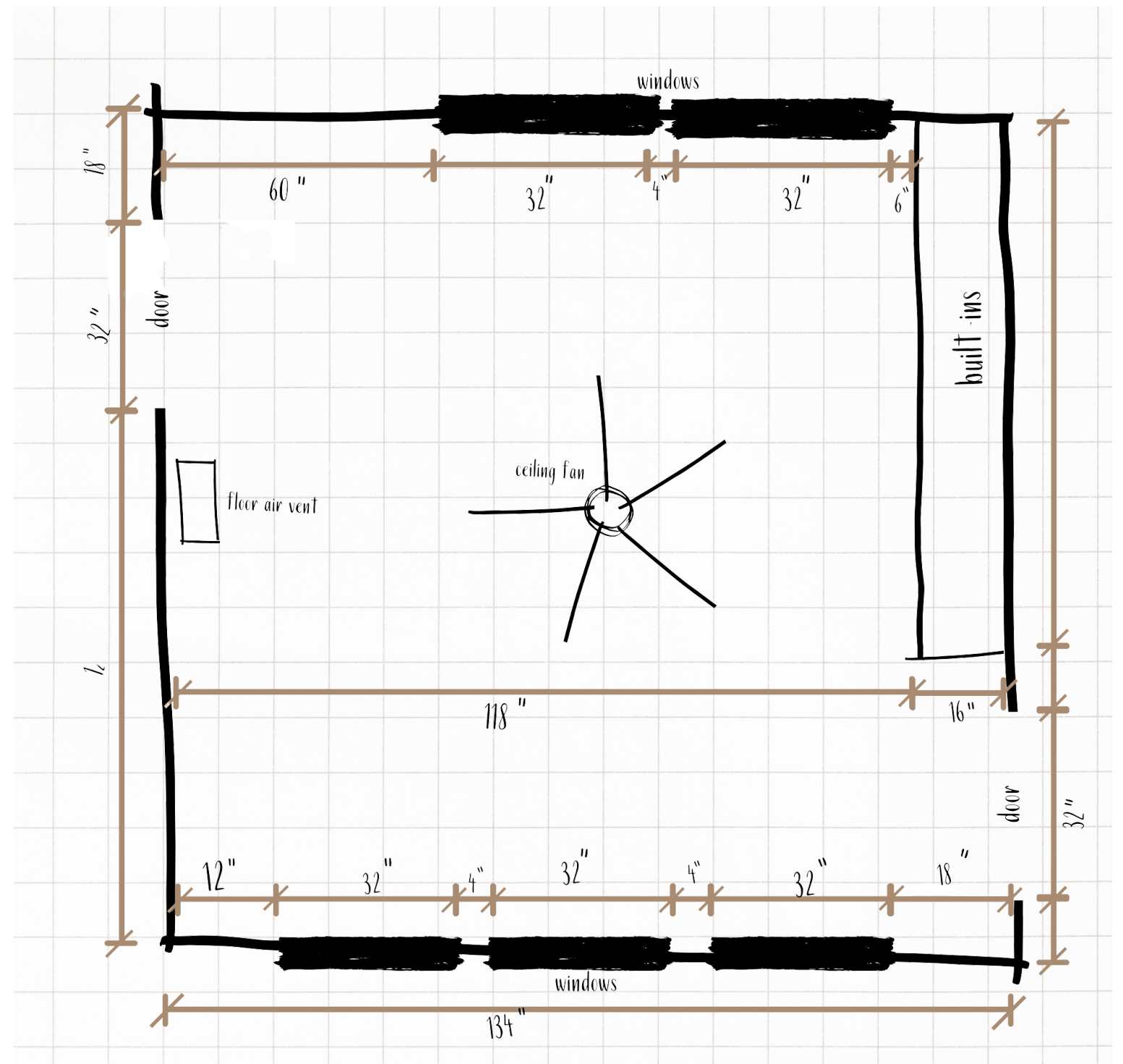
WALLS, WINDOWS, & DOORS

First, measure the general length and width of the room with the walls. Then measure doors, windows, and anything built-in. These dimensions should include their distance from the floor and ceiling.

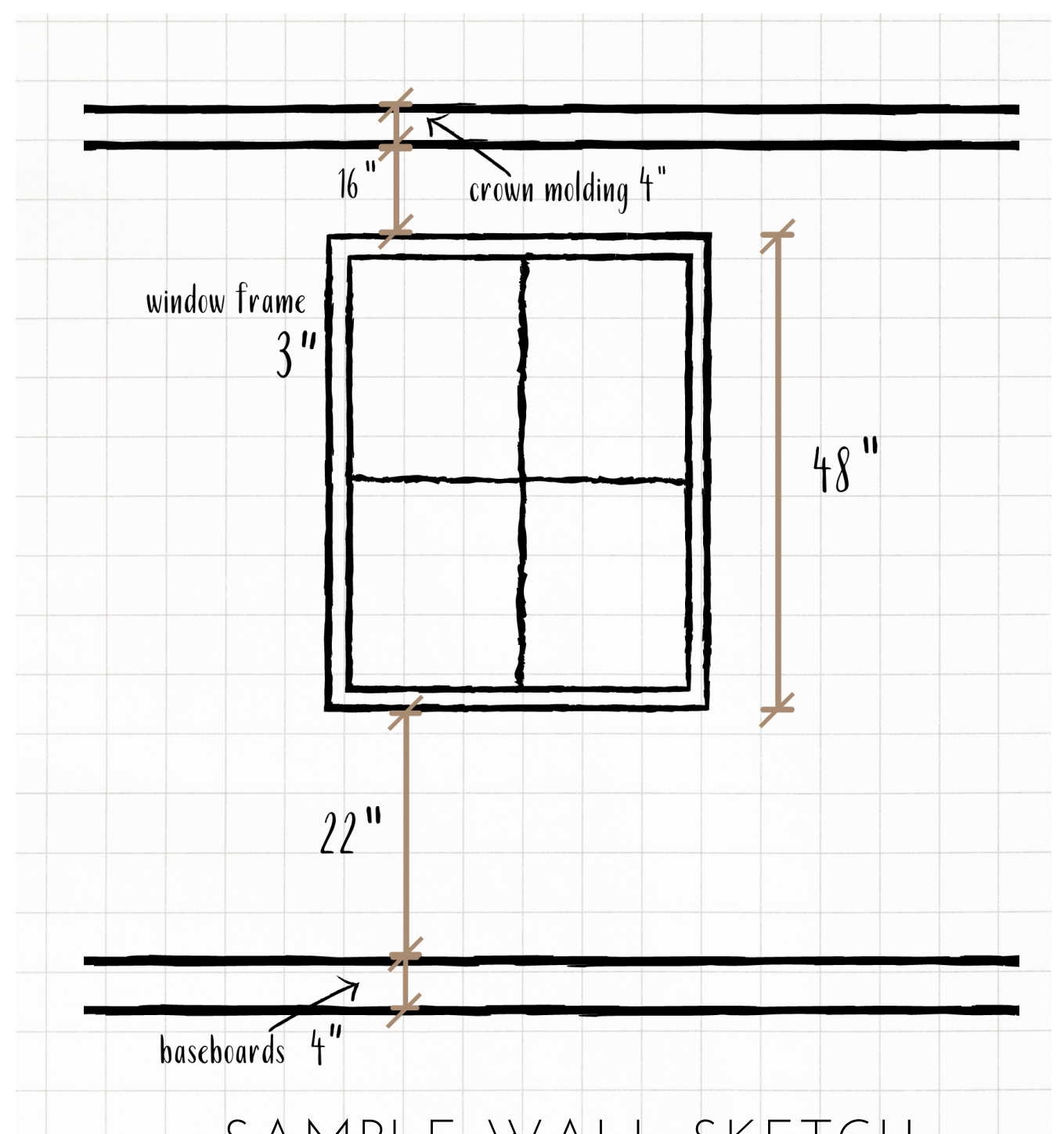


DETAILS

Measure and note locations of, and distance between, outlets, light switches, thermostats, air vents/returns, baseboards, crown molding, light fixtures, etc.

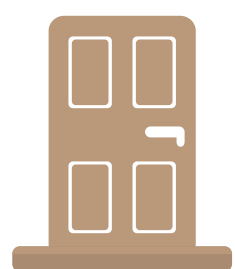
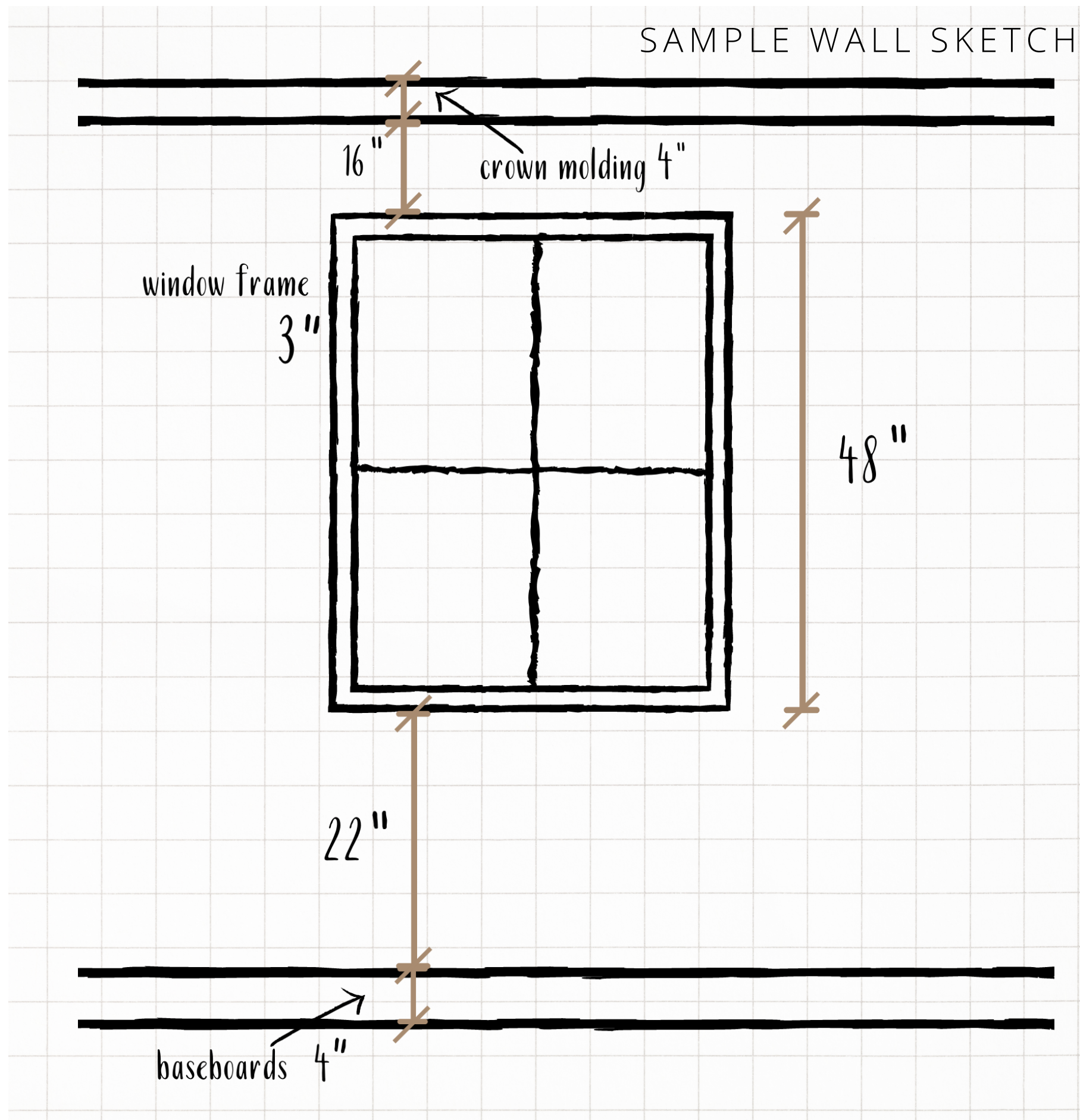


SAMPLE ROOM SKETCH



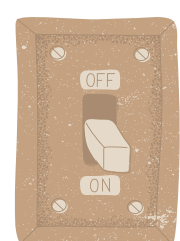
SAMPLE WALL SKETCH

HOW TO MEASURE YOUR SPACE



WALLS, WINDOWS, & DOORS

First, measure the general length and width of the room with the walls. Then measure doors, windows, and anything built-in. These dimensions should include their distance from the floor and ceiling.



DETAILS

Measure and note locations of, and distance between, outlets, light switches, thermostats, air vents/returns, baseboards, crown molding, light fixtures, etc.

HOW TO PHOTOGRAPH YOUR SPACE

LET THE LIGHT IN

- Open all the shades and get as much light in the room as possible

STRAIGHT ON OF EVERY WALL

- Stand as far back from each wall as possible and take a photo "straight on" at each wall.
- Then do the same from each corner of the room

ANGLES

- Angle your camera up to get a view of the ceiling.
- Angle it down for a view of the floor

DETAILS

- Let us know if there are any pinch points or unique elements that we will need to work around.
- Include close up photos of any materials that will remain (flooring, tile, paint color). If you have links for these items, that is really helpful!
- Include photos and dimensions for any furnishing items that will remain. If you have links for these items, that's great!